

MONOCRYL*

(poliglecaprone 25) Monofilament Suture

MONOCRYL* Plus

Antibacterial (poliglecaprone 25) Monofilament Suture

THE PERFECT ALTERNATIVE TO CHROMIC GUT

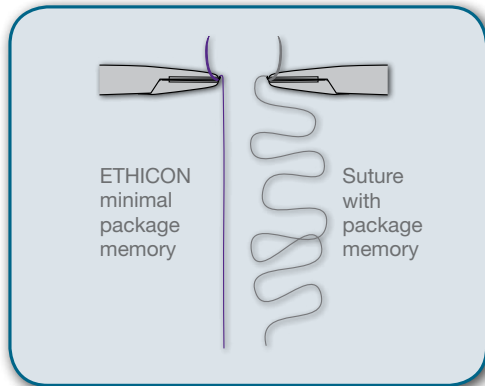
A number of unique features sets MONOCRYL* apart. It provides a smooth, even passage through tissue, causing less reaction than chromic gut suture. MONOCRYL* suture also offers a predictable absorption rate.

- Synthetic, absorbable monofilament suture
- Great pliability and smooth passage through tissue
- For wounds that require high initial tensile strength and heal within 21 days

MONOCRYL* Plus offers the same handling and performance as MONOCRYL* along with antibacterial protection.

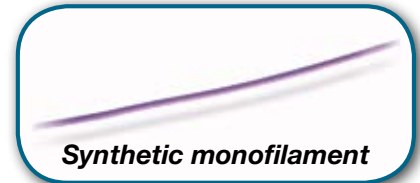
- Coated with the proven broad-spectrum antibacterial triclosan to create a zone of inhibition around the suture line
- Effective against *Staph A*, *Staph E*, *MRSA*, *MRSE*, *E. coli* and *Klebsiella pneumoniae*

Out-of-package Memory Comparison

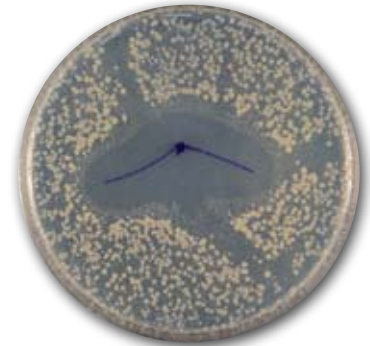


Straighter suture means easier handling and less tissue drag.

Less Tissue Reaction and No Fraying

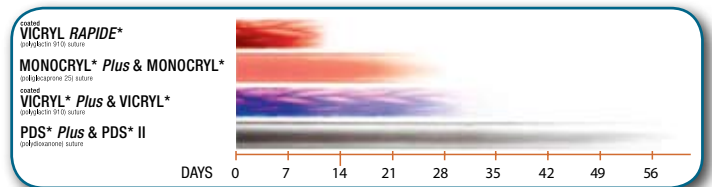


ETHICON synthetic monofilament suture maintains integrity after multiple passes; chromic gut can fray.





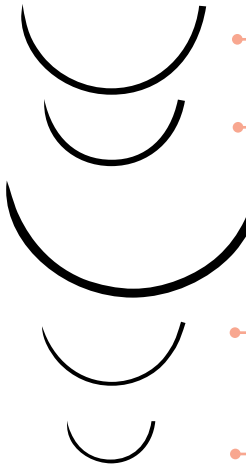
Shown: MONOCRYL* Plus Antibacterial (poliglecaprone 25) Monofilament Suture creating a zone of inhibition against *E. coli*.

Tensile Strength Comparison



TENSILE STRENGTH PROFILE			FULLY ABSORBED AT:
Percentage of original tensile strength			
Suture	Week #1	Week #2	90-119 days
MONOCRYL* Plus and MONOCRYL*	60%–70%	30%–40%	

Additional medical treatment should be given as indicated. Use of ETHICON Plus Antibacterial Sutures does not replace antimicrobials or appropriate surgical technique.

Needle	Needle Reference	Suture Size							
		3	2	1	0	2-0	3-0	4-0	5-0
Precision Point-Reverse Cutting									
	P-3							Y464G BX12/18in Violet	Y463G BX12/18in Violet
	P-3							Y494G BX12/18in Undyed	Y493G BX12/18in Undyed
Reverse Cutting									
	FSL				MCP987H Y987H BX36/36in Violet				
	CP-1				MCP967H Y967H BX36/36in Violet				
	FS-1					MCP943H Y943H BX36/36in Violet	MCP942H Y942H BX36/36in Violet		
	FS-2						MCP923H Y923H BX36/36in Violet	MCP922H Y922H BX36/36in Violet	
Taper Point									
	CT-1			Y347H BX36/36in Violet	MCP346H Y346H BX36/36in Violet	MCP345H Y345H BX36/36in Violet	MCP344H Y344H BX36/36in Violet		
	CT-2				Y334H BX36/27in Violet	Y762H BX36/36in Violet			
	CTX			Y399H BX36/36in Violet					
	SH					Y732H BX36/36in Violet	MCP316H Y316H BX36/27in Violet	Y315H BX36/27in Violet	
	RB-1						Y416H BX36/27in Undyed		
								Y304H BX36/27in Violet	Y303H BX36/27in Violet

MCP = MONOCRYL* Plus Y = MONOCRYL*

Frequent Uses:

- Bladder
- Gastric
- Subcuticular closure
- Ligatures
- Reproductive Tract
- Fascia closure / Linea alba (young, healthy, fast-healing animals)
- Lacerations

For a hands-on demonstration of the advantages of MONOCRYL* and MONOCRYL* Plus sutures, contact your Novartis Animal Health US, Inc. representative today.



ETHICON, INC.
a Johnson & Johnson company

Partners
in surgical
excellence

*Trademark of ETHICON, INC.
© 2008 Novartis Animal Health US, Inc. www.ethicon.novartis.us ETH080009A

NOVARTIS
ANIMAL HEALTH